



# PU AUTOPILOT MANUAL





# PU AUTOPILOT PANEL

## 기능 Features

- GAL나 AIRLINE 상관없이 현존 대부분의 기체에서 사용할 수 있도록 공통기능으로 구성하였습니다

Designed for any airplane with most common functions

- 15개의 버튼과 5개의 너브를 통한 총 25개의 자유로운 입력

Customize with 15 buttons, 5 rotary knobs support total 25 inputs

- HEADING, ALTITUDE, AIRSPEED 표시하는 3개의 OLED 액정

3 OLED Displays showing HEADING, ALTITUDE, AIRSPEED



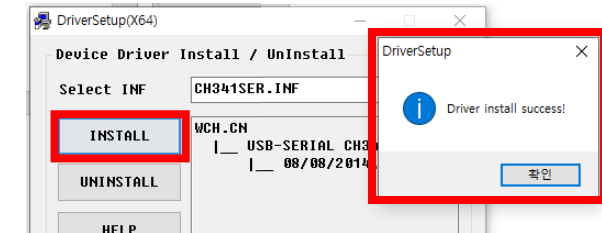
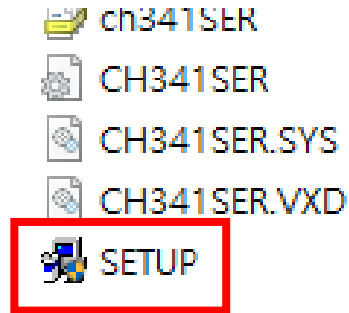
# PU AUTOPILOT PANEL

## 기능 Features

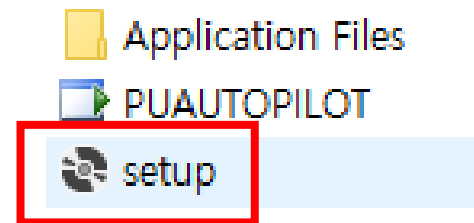
- FLIGHT PLAN상 NEXT WAYPOINT 이름과 잔여거리, 잔여시간을 표시하는 OLED 액정  
A Big OLED Display for NEXT WAYPOINT, DISTANCE and ETE from your FlightPlan
- 패널 전반의 웜화이트 불빛  
WarmWhite Back Light
- 버튼부는 모든 플랫폼에서 사용가능 하지만 OLED액정을 통한 정보표시는 MSFS2020만 지원합니다.  
Currently buttons are support other platforms but OLED Displays are only support MSFS2020

# 드라이버와 클라이언트 설치 Driver and Client

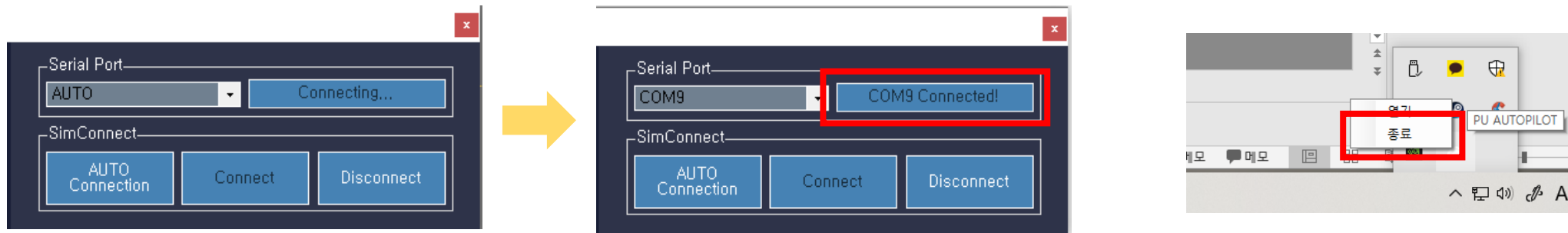
드라이버 설치 Driver installation  
AUTOPILOT PANEL\PU AUTOPILOT DRIVER\SETUP



클라이언트 설치 Client installation  
AUTOPILOT PANEL\PU AUTOPILOT CLIENT\SETUP



# 드라이버와 클라이언트 설치 Driver and Client



클라이언트는 수초내에 PU AUTOPILOT 을 감지하고 연결합니다.  
자동으로 연결이 되지 않을 경우 클라이언트 재실행 부탁드립니다.

Client will detect and connect PU AUTOPILO PANEL in few secinds.  
If it's not working, please restart the client.

# 드라이버와 클라이언트 설치 Driver and Client

## SimConnect

MSFS2020과 자동으로 연결합니다.  
Connect MSFS2020 automatically

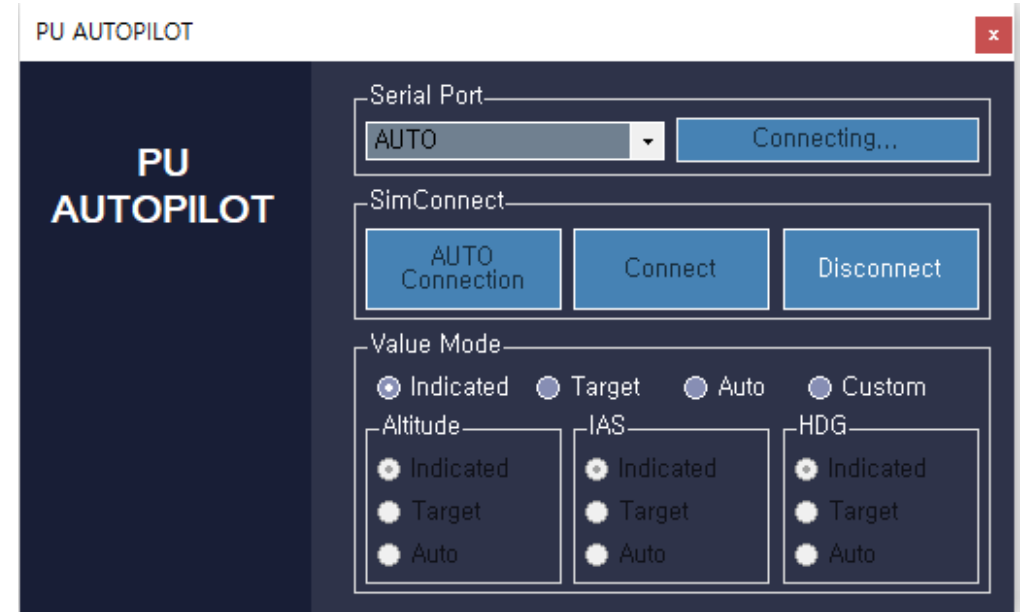
## Value Mode

Indicated  
고도, 속도, 헤딩의 현재 정보를 액정에 표시합니다.  
Display current altitude, speed, heading

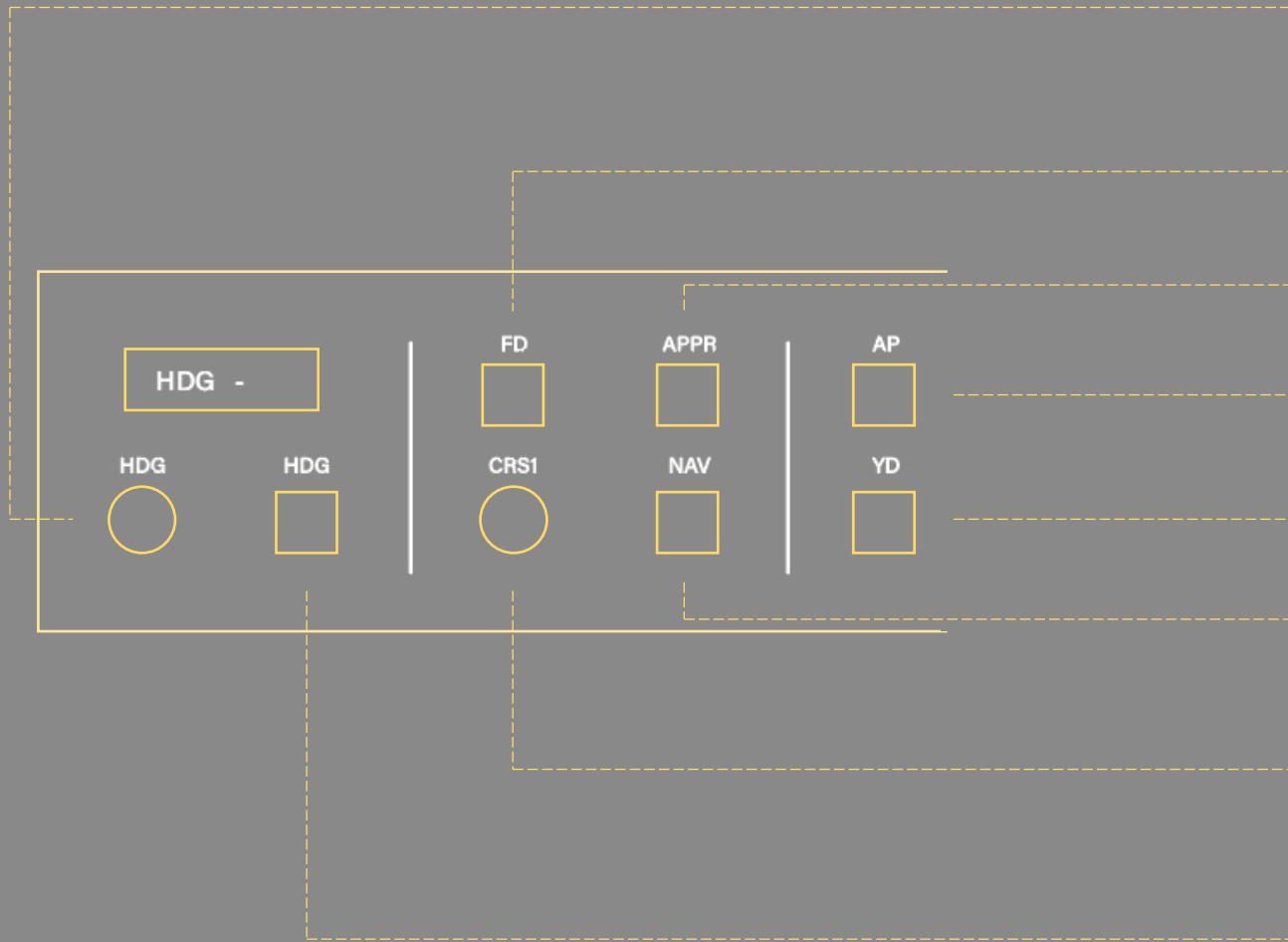
**Target** ( 1초 딜레이가 존재합니다. caution, 1second delay )  
고도, 속도, 헤딩의 타겟정보를 액정에 표시합니다.  
Display target altitude, speed, heading

## Auto

고도, 속도, 헤딩의 타겟정보의 값이 변하면 타겟정보를 3초간 보여주고 다시 현재 정보를 액정에 표시합니다.  
If target infos are changed display target information for 3 seconds.



# RECOMMENDED MSFS2020 CONTROL SETTING



LEFT DECREASE HEADING BUG  
RIGHT INCREASE HEADING BUG  
CLICK SET HEADING BUG

TOGGLE FLIGHT DIRECTOR

TOGGLE AUTOPILOT APPROACH HOLD

TOGGLE AUTOPILOT MASTER

TOGGLE YAW DAMPER

AUTOPILOT NAV1 HOLD

LEFT DECREASE VOR1 OBS  
RIGHT INCREASE VOR1 OBS  
CLICK SET VOR1

TOGGLE AUTOPILOT HEADING HOLD

# RECOMMENDED MSFS2020 CONTROL SETTING



TOGGLE FLIGHT LEVEL CHANGE

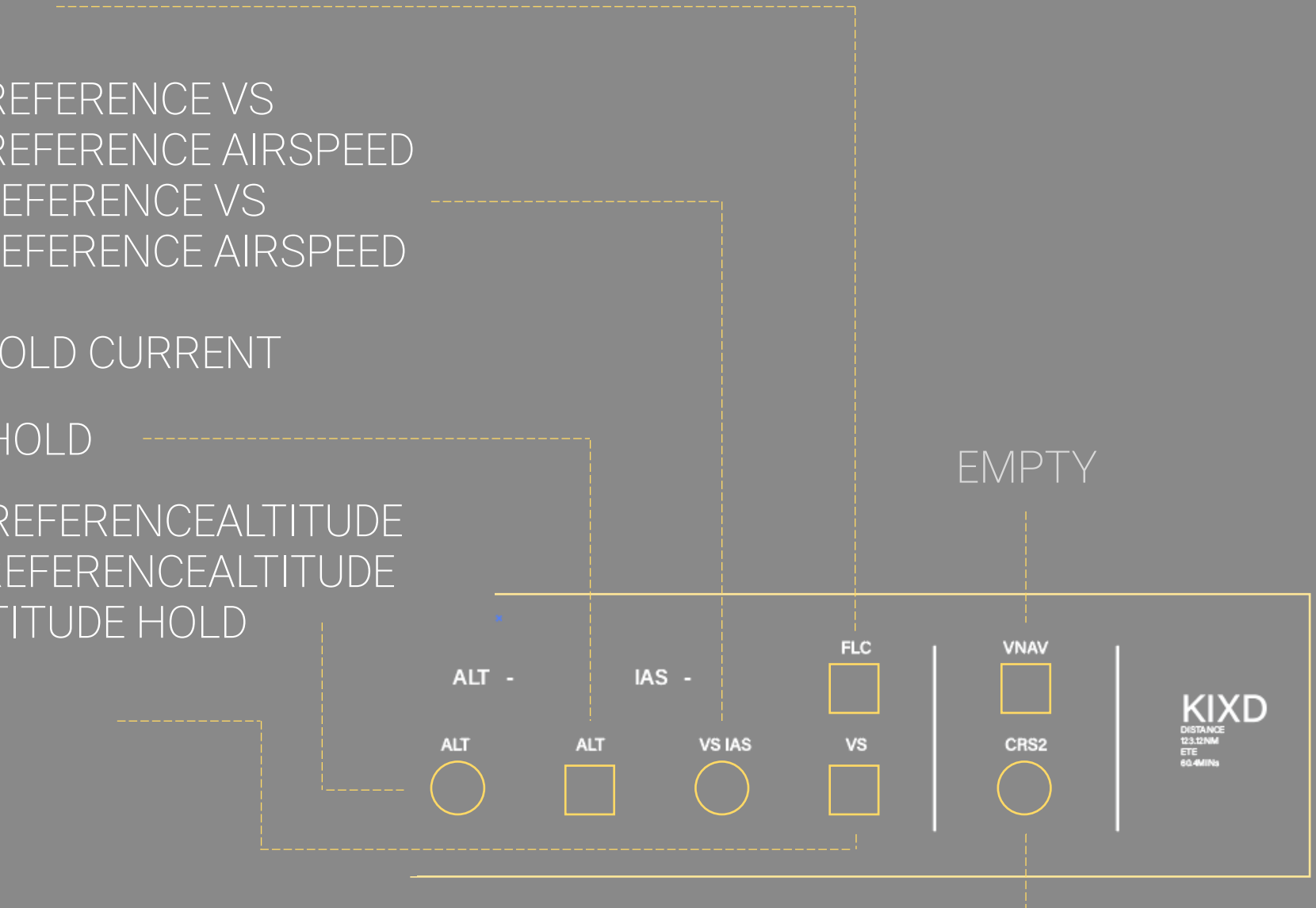
- LEFT DECREASE AUTOPILOT REFERENCE VS  
DECREASE AUTOPILOT REFERENCE AIRSPEED
- RIGHT INCREASE AUTOPILOT REFERENCE VS  
INCREASE AUTOPILOT REFERENCE AIRSPEED
- CLICK SET AP CURRENT VS  
AUTOPILOT AIRSPEED HOLD CURRENT

TOGGLE AUTOPILOT ALTITUDE HOLD

- LEFT DECREASE AUTOPILOT REFERENCE ALTITUDE
- RIGHT INCREASE AUTOPILOT REFERENCE ALTITUDE
- CLICK TOGGLE AUTOPILOT ALTITUDE HOLD

TOGGLE AUTOPILOT VS HOLD

- LEFT DECREASE VOR2 OBS
- RIGHT INCREASE VOR2 OBS
- CLICK SET VOR2







# ISSUE REPORT ( 2021.07.23 )

## COMMON ERROR

for .net framework error

### Install .net Utility

.net 5.0 Net sdk x64

<https://dotnet.microsoft.com/download/dotnet/thank-you/sdk-5.0.302-windows-x64-installer>

.net runtime

<https://dotnet.microsoft.com/download/dotnet/thank-you/runtime-desktop-5.0.8-windows-x64-installer>

## USE DC POWER

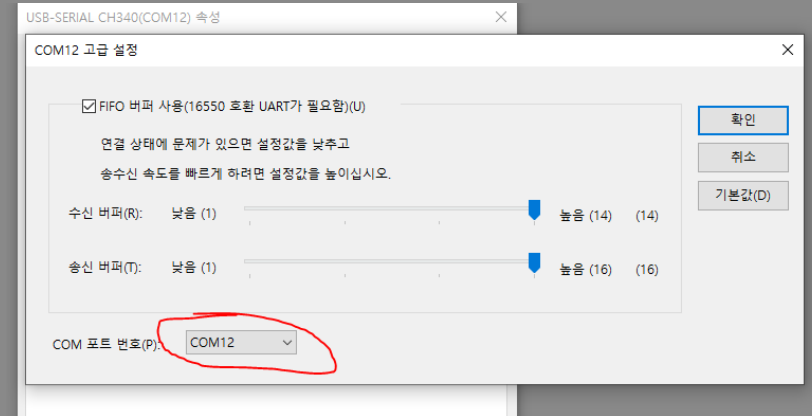
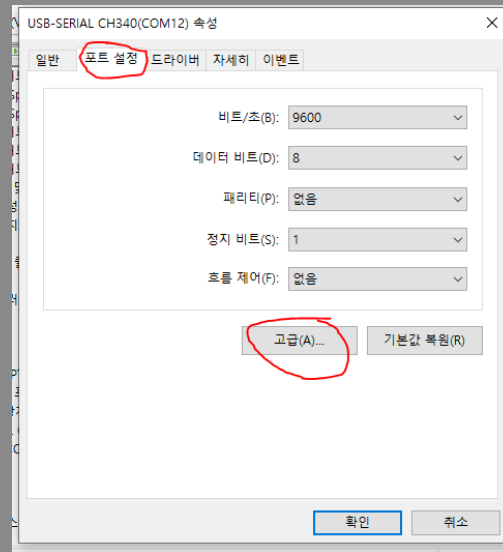
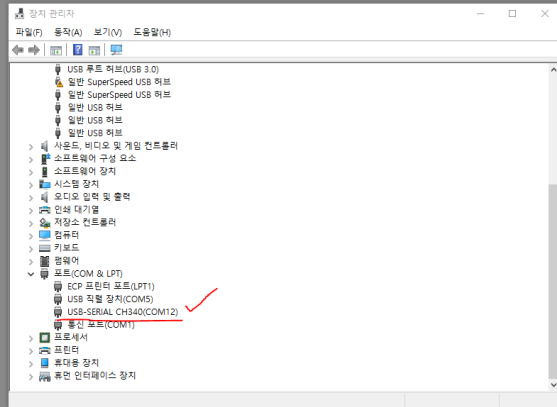
By default, we provide 4PORT USB 3.0 HUB.

If a large number of devices are connected to a USB hub, an instantaneous power outage may occur due to lack of power. Even if you don't, you might run out of power depending on your computer's situation. Connect the DC 5v adapter to the USB hub to prevent momentary power failure due to low power.

## NOT CONNECTING AUTOMATICALLY PORT PROBLEM

The client program automatically connects the PU AUTOPILOT panel.

If the program is not responsive or auto connecting is not working properly, a port crash is suspected.



Right-click CH340 in Device Manager

Port Settings-In Advanced, set the COM port number to the front number (com 1 to 4).

Please set the port number of other devices to the back number (com10~) to secure the interval.



# ISSUE REPORT ( 2022.03.15 )

## Target informations may not work on the displays

For Default planes

Target informations will display on OLED display.

For Non-default planes

Target informations will not display on OLED display.

due to Index value difference between MSFS2020 and others(FBW, PMDG, etc)

