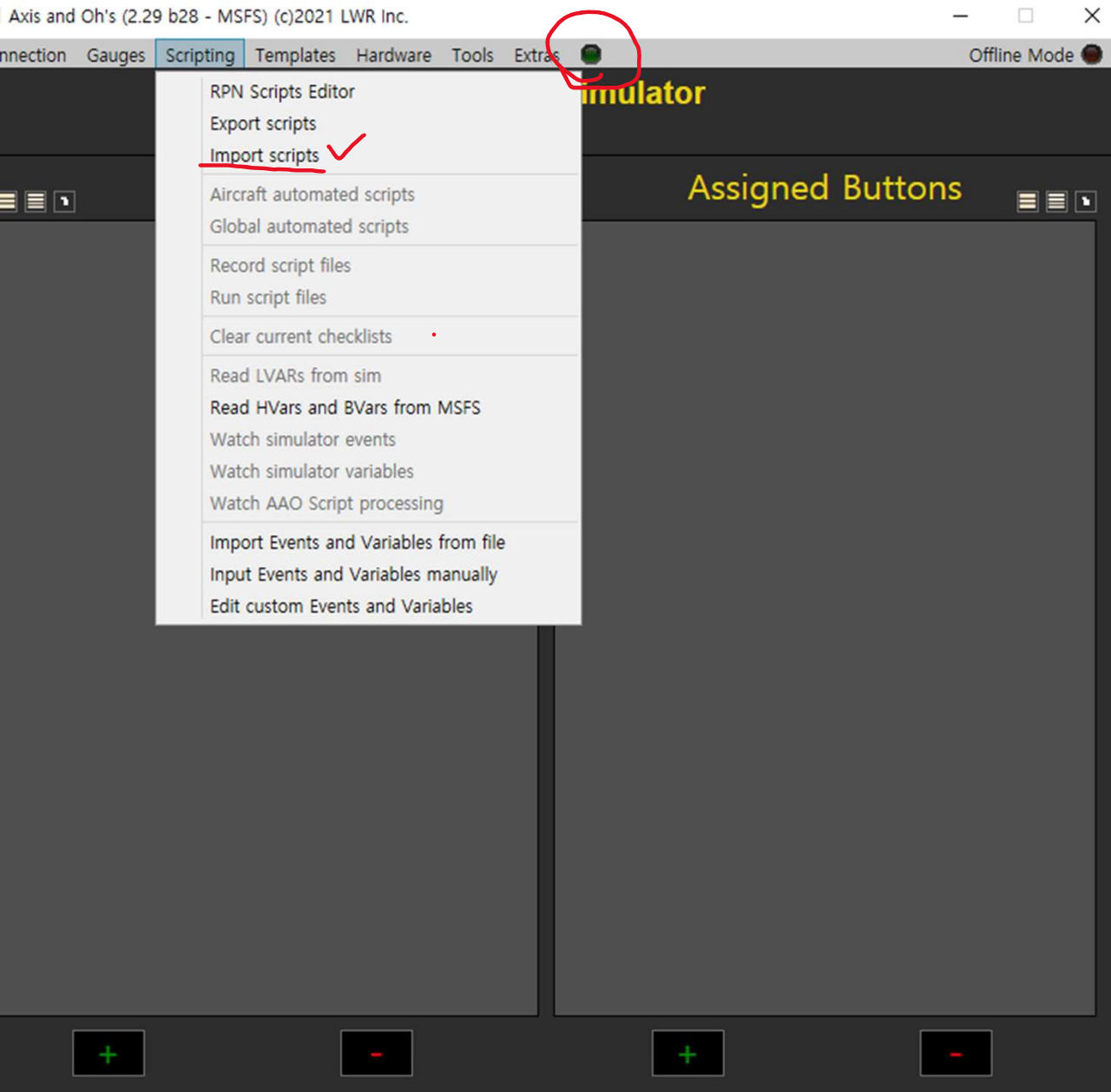
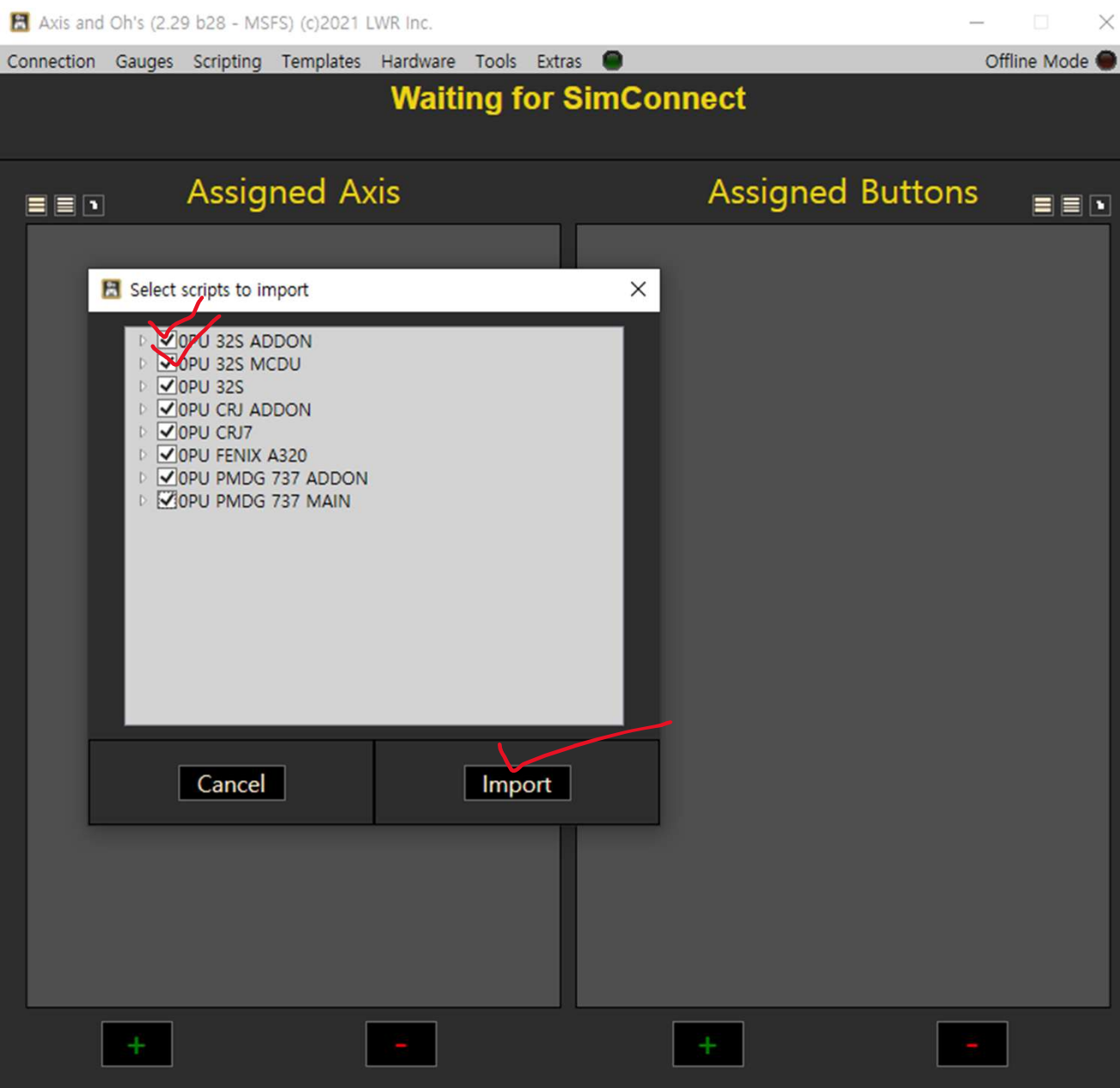


## HOW TO IMPORT SCRIPTS



Click the green round button  
To disconnect with MSFS  
for import scripts



Select and Import scripts

29 b28 - MSFS) (c)2021 LWR Inc.

Scripting Templates Hardware Tools Extras

**PMDG 737-700 PMDG House (N737BW | 2021)**

Axis and Oh's (2.29 b28 - MSFS) (c)2021 LWR Inc.

Connection Gauges Scripting Templates Hardware Tools Extras Offline Mode

- RPN Scripts Editor
- Export scripts
- Import scripts
- Aircraft automated scripts
- Global automated scripts
- Record script files
- Run script files
- Clear current checklists
- Read LVARs from sim ✓
- Read HVars and bvars from MSFS
- Watch simulator events
- Watch simulator variables
- Watch AAO Script processing
- Import Events and Variables from file
- Input Events and Variables manually
- Edit custom Events and Variables

PMDG House (N737BW | 2021)

Assigned Buttons

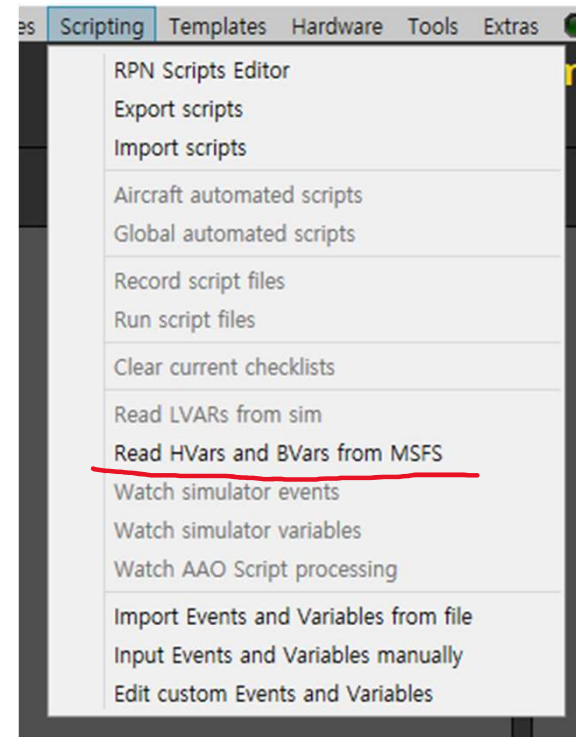
Connect simulator and  
Load airplane which you want to fly  
Read LVARs from sim

Collecting LVARs, please wait

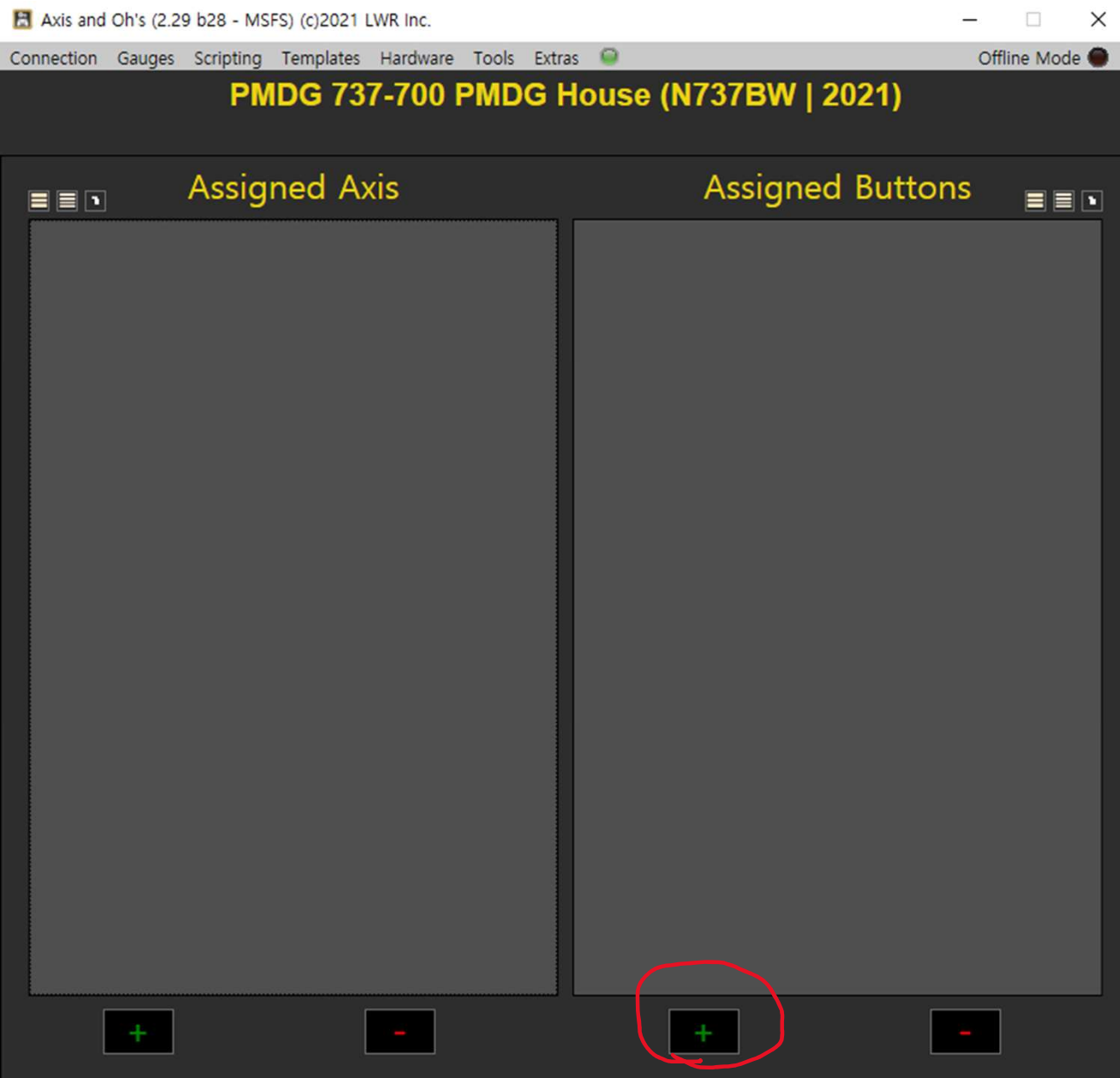
LVARs collected!

Wait until LVARs collected.  
After LVARs collected.  
Read HVARs

2.29 b28 - MSFS) (c)2021 LWR Inc.



HOW TO BIND



Load airplane  
And click +

Add Button Assignment

Key Down Event: NONE (None) 1 Roll 1

Key Up Event: NONE (None) 1 Roll 1

Virtual key: None X

Device: - ! X

Assigned button/key: None ! X Skip 0

☐ MIDI: Endless ☐ MIDI: Rocker ☐ Joystick: Switch ☐ Keyboard: Sim Key

☐ Fast Turn 100 ms ☐ Long Click 400 ms ☐ Repeat Fast Med Slow ☐ Adaptive

Assigned Combo: None X

☐ suppress Key Down Event ☐ is toggle

Custom Label: X

Cancel Add

This is assignment page  
With this page  
Just push or turn on the BUTTON  
Which you want to bind.  
I mean physically. Not in the screen.

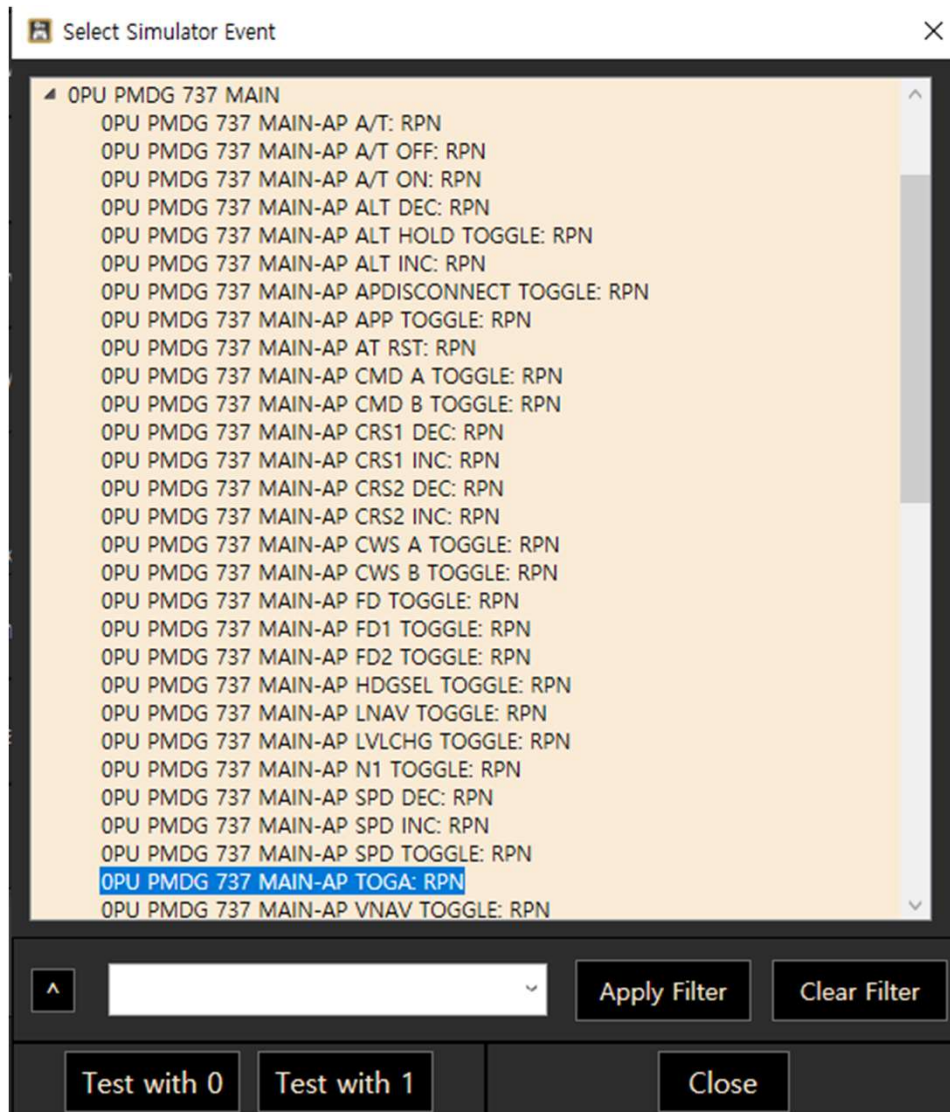


Add Button Assignment

Key Down Event:	NONE (None)	1	Roll 1
Key Up Event:	NONE (None)	1	Roll 1
Virtual key:	None	X	
Device:	PU AUTOPILOT [a59965f0-7bba-11ec-80...	!	
Assigned button/key:	Button <11>	!	X
Skip 0			
<input type="checkbox"/> MIDI: Endless	<input type="checkbox"/> Fast Turn	<input type="checkbox"/> Long Click	<input type="checkbox"/> Repeat
<input type="checkbox"/> MIDI: Rocker	<input type="checkbox"/> Adaptive		
<input type="checkbox"/> Joystick: Switch	100 ms	400 ms	<input type="radio"/> Fast <input type="radio"/> Med <input type="radio"/> Slow
<input type="checkbox"/> Keyboard: Sim Key			
Assigned Combo:	None	X	
<input type="checkbox"/> suppress Key Down Event <input type="checkbox"/> is toggle			
Custom Label:		X	
Cancel	Add		

See?  
I just pushed button 11  
At autopilot panel

Click the event



Select function.

Add Button Assignment

Key Down Event: OPU PMDG 737 MAIN-AP TOGA (RPN) 1 Roll 1

Key Up Event: NONE (None) 1 Roll 1

Virtual key: None X

Device: PU AUTOPILOT [a59965f0-7bba-11ec-8c X

Assigned button/key: Button <11> X Skip 0

☐ MIDI: Endless ☐ MIDI: Rocker ☐ Joystick: Switch ☐ Keyboard: Sim Key

☐ Fast Turn 100 ms ☐ Long Click 400 ms ☐ Repeat ☐ Adaptive

☐ Fast ☐ Med ☐ Slow

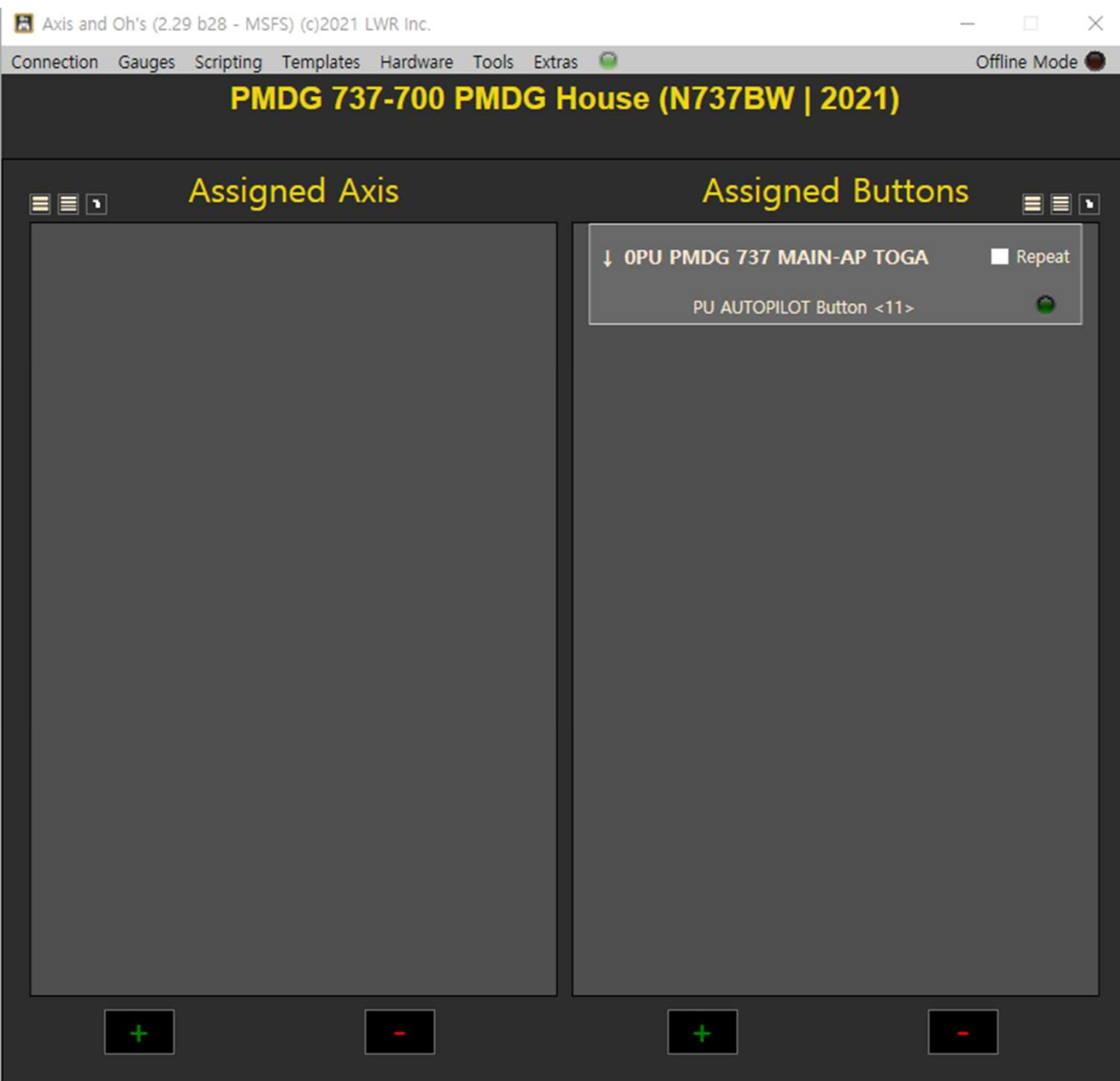
Assigned Combo: None X

☐ suppress Key Down Event ☐ is toggle

Custom Label: X

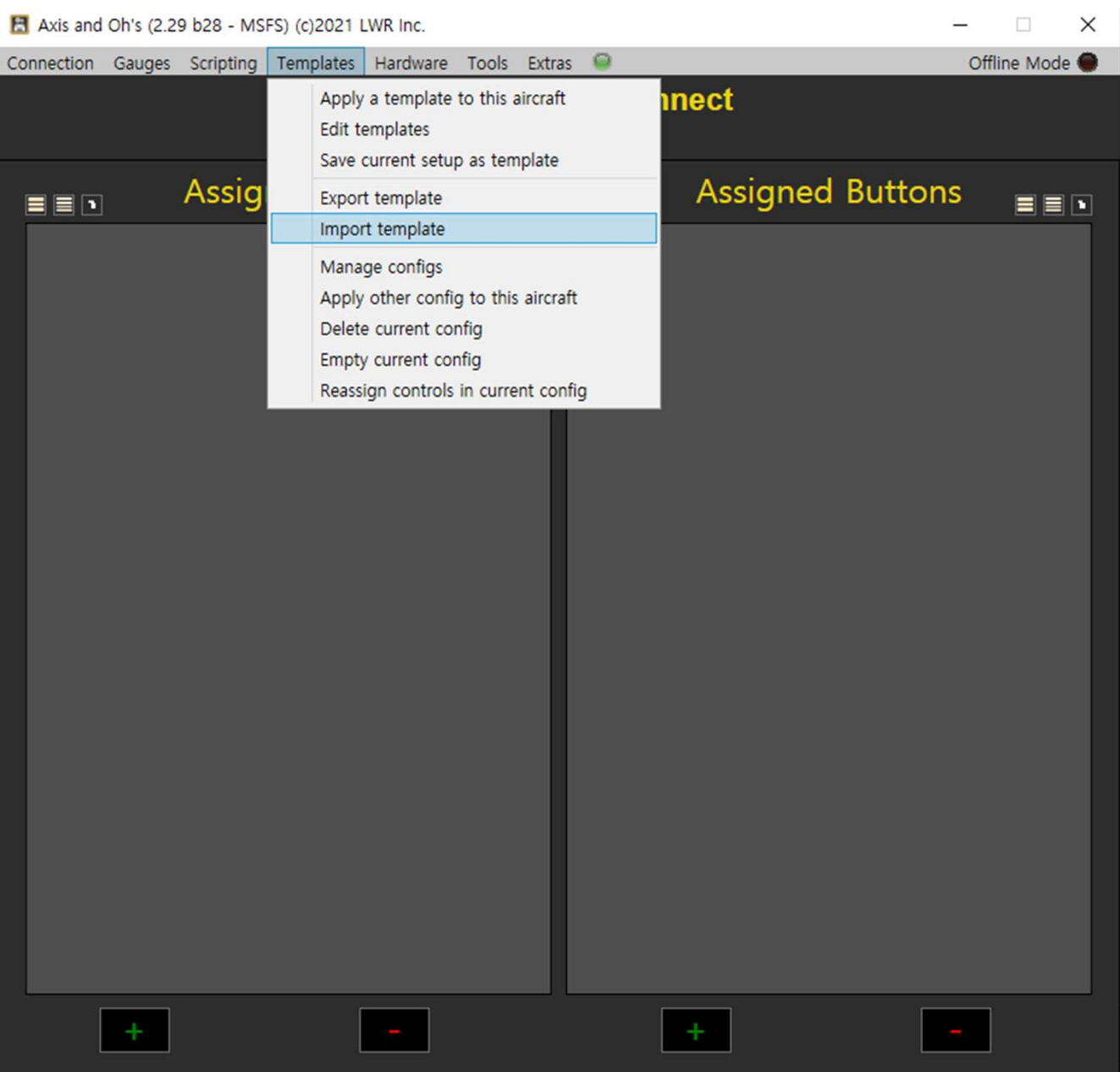
Cancel Add

See?  
TOGA function  
Mapped on  
Auto pilot panel Button 11

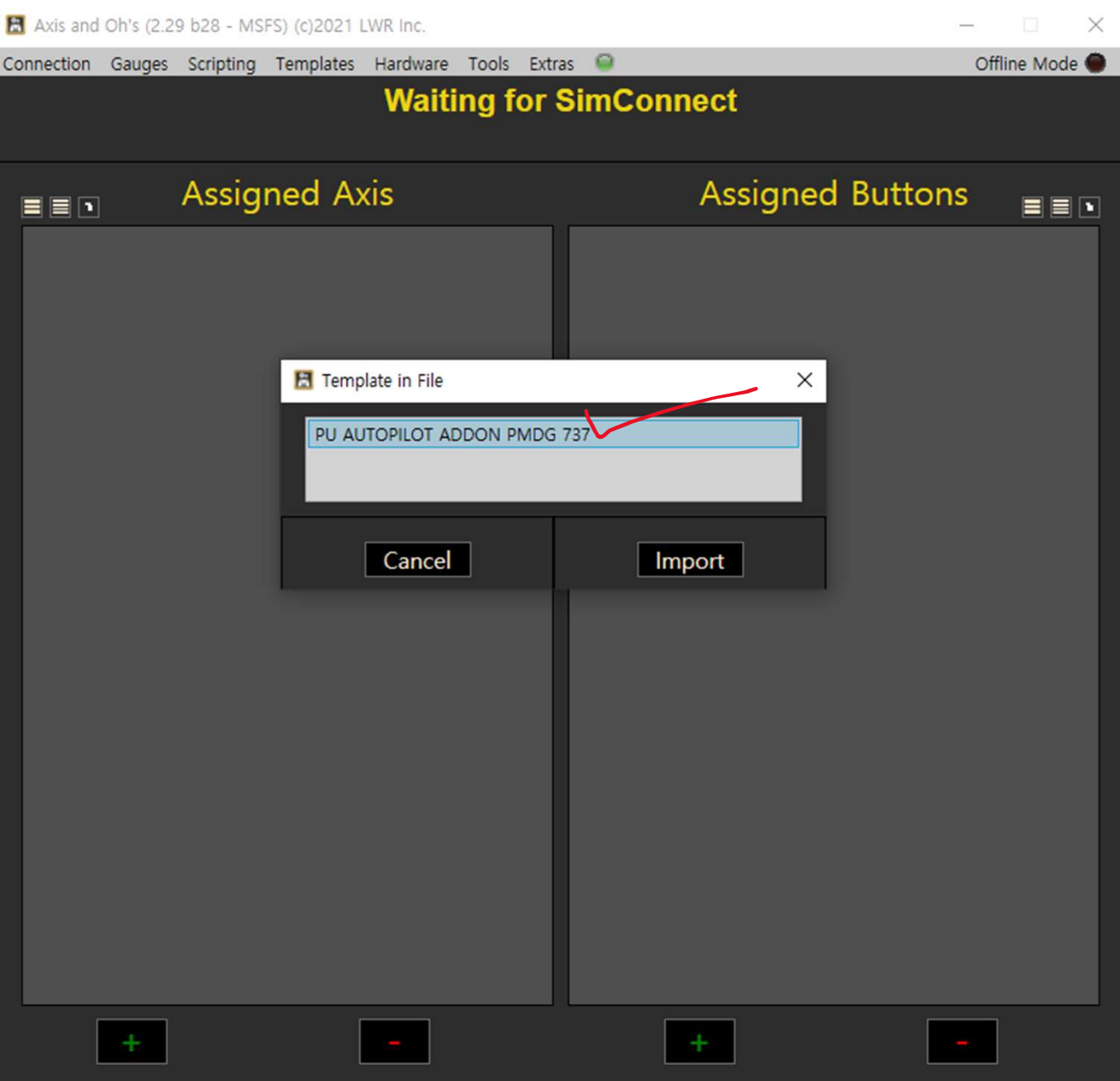


done

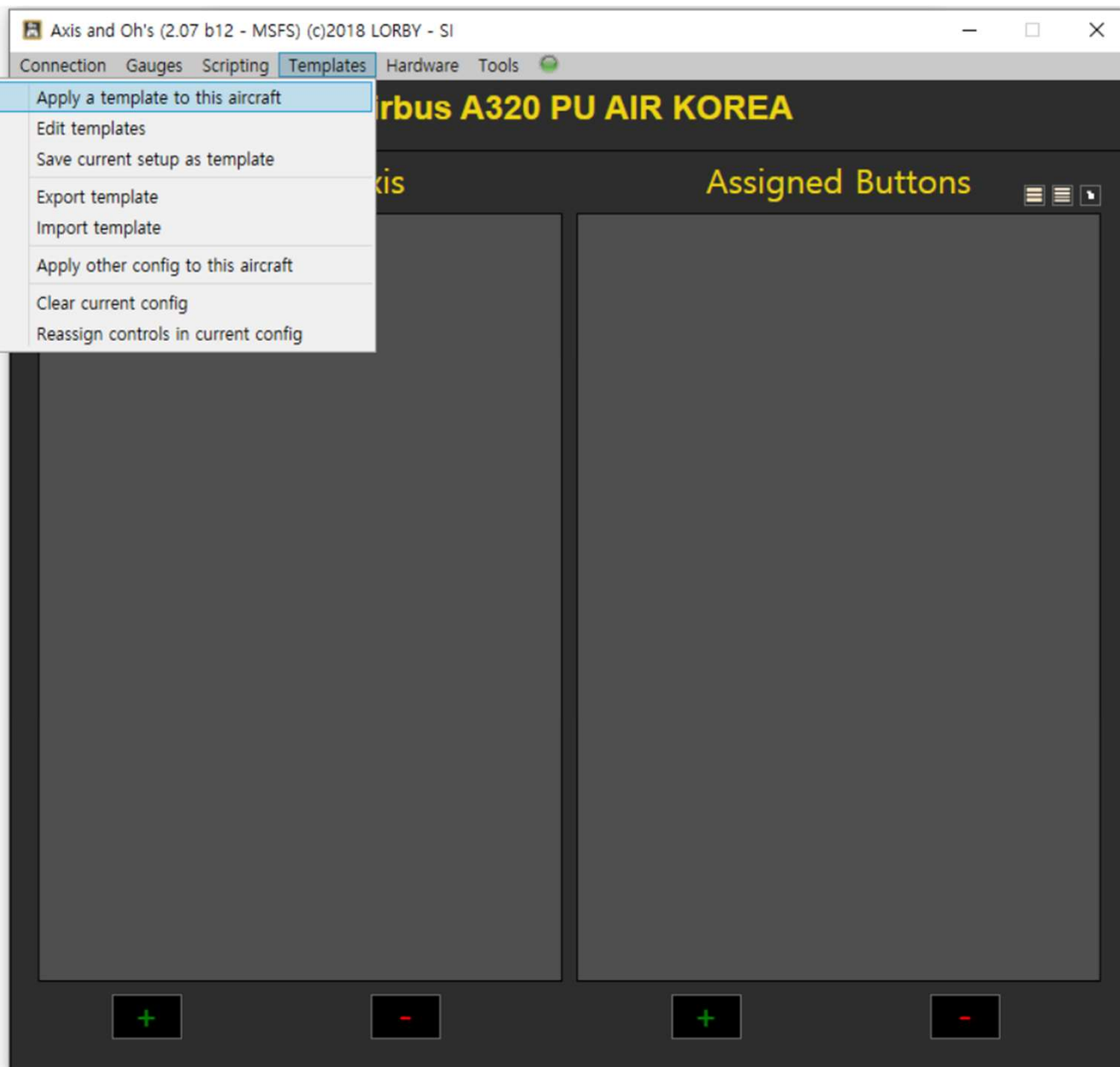
## HOW TO IMPORT TEMPLATE



Fir you have to import  
template

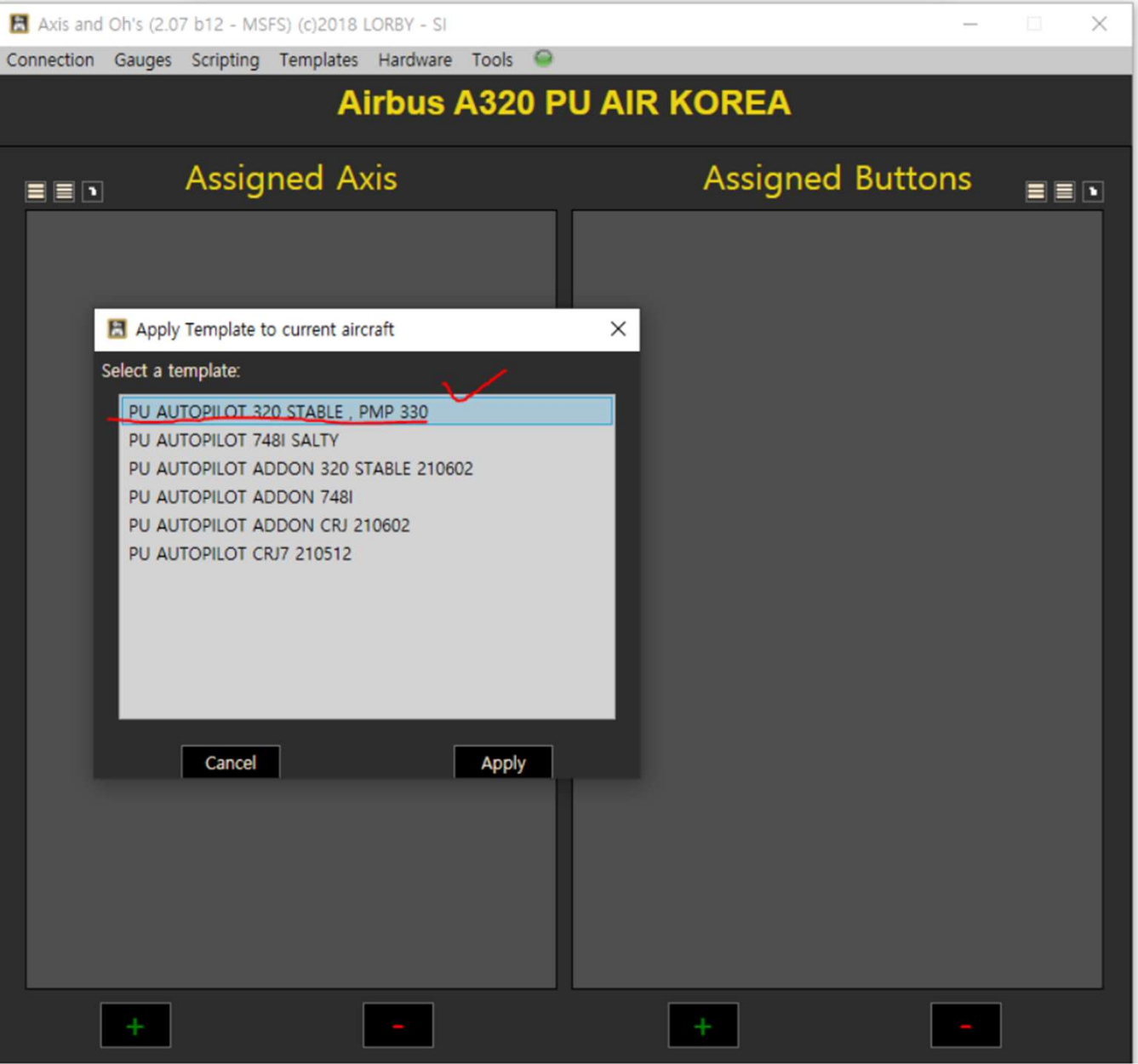


Select template  
Before you click the import  
**Please click on the  
template name**

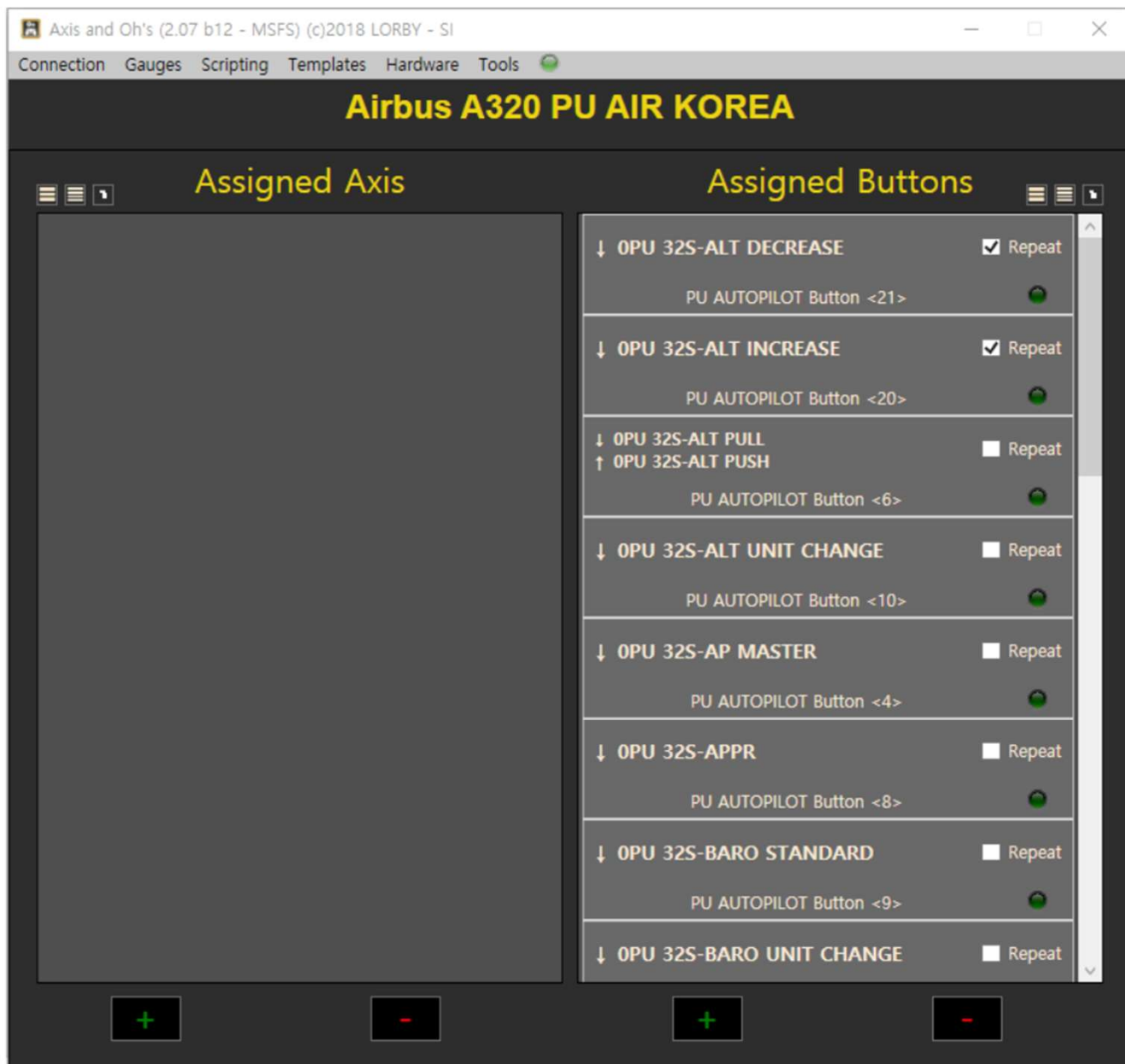


After import  
Load airplane,  
Apply a template





Select one.  
What you want to apply



done

For more detail  
Check Lorby's Axis And Ohs's manual